



Te Kaunihera o
MANUKAU
City Council

Safer Manukau Through Design

Draft Strategy for Crime Prevention Through Environmental Design in Manukau

Yu Yi, Planner City Image, Manukau City Council
Chloe Trenouth, Senior Consultant, Hill Young Cooper



Why CPTED in Manukau

- Safety and the perception of safety is a major issue in Manukau
- In November 2005, Ministry of Justice released a '*National Guidelines for Crime Prevention Through Environmental Design in New Zealand*'. Part Two of the Guide provides an implementation guide for the local authorities
- Council, a signatory to the *NZ Urban Design Protocols*
- *Tomorrow's Manukau outcomes* (SC3.3 and MM3.9)



Key Challenges

- **Political support**, e.g. concerns over private property rights
- **Staff commitment**, e.g. additional workload
- **Community preference**, e.g. CCTV option
- **Technical competency** of staff, e.g. relevant staff don't have adequate skills
- **Resources required**, e.g. " I agree CPTED is important but sorry I do not have any budget or staff to do this"



Why a Strategy for CPTED

The need to:

- Recognise the need to apply CPTED Strategies across Council
- Recognise current achievements
- Identify the gaps
- Explore opportunities to apply CPTED principles
- Evaluate the cost and benefit of different options
- Identify and prioritise likely actions
- Allocate appropriate financial resources

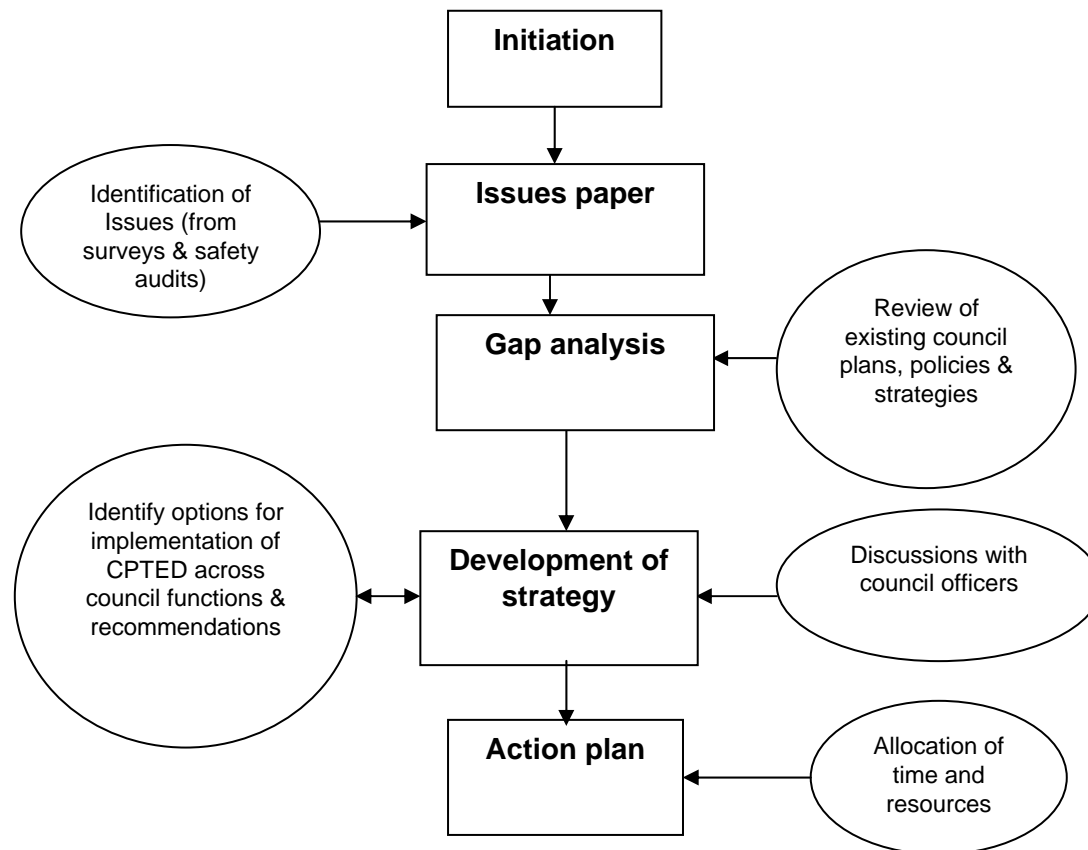


Process to develop this Strategy

- Budgeted through *LTCCP* 2006-2016
- Linked with wider Community Safety Action Plan
- A seminar held for elected members, community leaders, and senior managers was held to raise the awareness of CPTED
- A one day workshop held for relevant staff to provide basic skills for handing CPTED issues
- Terms of reference approved in December 2004
- A cross-organisational project team established
- Hill Young Cooper contracted
- Initial draft completed in September 2005



Methodology for Preparing Strategy





Te Kaunihera o
MANUKAU
City Council

Safer Manukau Through Design

Key Focus Areas

- Town centres
- Car parks
- Public parks and amenities
- Alleyways and walkways
- Transport stops and interchanges
- Community facilities
- Private developments





Key Findings – Gap Analysis

- Generally documents only partially addressed CPTED elements
- Overlap with urban design outcomes
- Documents for Transport a significant gap
- Lack of formalised process for community-initiated safety audits
- Asset upgrade programme needs to reflect CPTED requirements
- District Plan partially addresses some CPTED elements



Implementation Objectives of Strategy

- Establish a structure that will lead the implementation of CPTED
- Provide professional CPTED design guidance
- Introduce CPTED principles into the District Plan
- Provide for implementation of CPTED principles through the Council's asset development and management processes
- Raise awareness and increase skills and understanding



Te Kaunihera o
MANUKAU
City Council

Safer Manukau Through Design

Key Actions: Leadership and Governance

- Appropriate steering group and project level champions committed to implementation
- Key actions involve establishing and formalising these roles
- First priority in the short term (2006/2007)
- No budget requirements



Key Actions: Professional CPTED Guidance

- Detailed professional CPTED guidance needed
- Key action is the development of a CPTED Code of Practice
- Second priority in short term (2006/2007)
- Targets to monitor achievement:
 - Initial Code developed by June 2007
 - Final Code published by June 2008
- \$40,000 budget over two years



Key Actions: District Plan

- Key mechanism for new development (private and public)
- Key action is to progressively apply CPTED principles in all relevant future plan changes
- Third priority – incremental implementation
- Targets to monitor achievement:
 - CPTED principles and elements incorporated as objectives, policies, rules and assessment criteria by June 2007
- No budget requirements (existing work programme)



Key Actions: Asset Development & Management

- Council role in development of the public realm
- Key actions are incorporation of CPTED into contracts & design briefs, and progressively into policy documents
- Implementation generally in the medium to long term
- Targets to monitor achievements
 - All policies and plans refer to CPTED code by June 2007
 - Funding for community-initiated safety audits (Annual Plan) by June 2008
- Budget \$5,000 - \$10,000



Key Actions: Public & Staff Awareness and Skills

- Importance of awareness and understanding of CPTED
- Key actions involve raising awareness of the CPTED code, suitable training programmes, and a process for community-initiated safety audits
- Implementation medium to long term
- Targets to monitor achievements:
 - 95% of relevant operational staff complete some form of CPTED training by June 2008
- \$40,000 - \$50,000 budget



Te Kaunihera o
MANUKAU
City Council

Safer Manukau Through Design

Some Insights ...