



# CURRENT POLICE INITIATIVES IN ALCOHOL HARM REDUCTION



**Update for Safer  
Communities  
Conference**

**August 2006**

# Setting the scene operationally

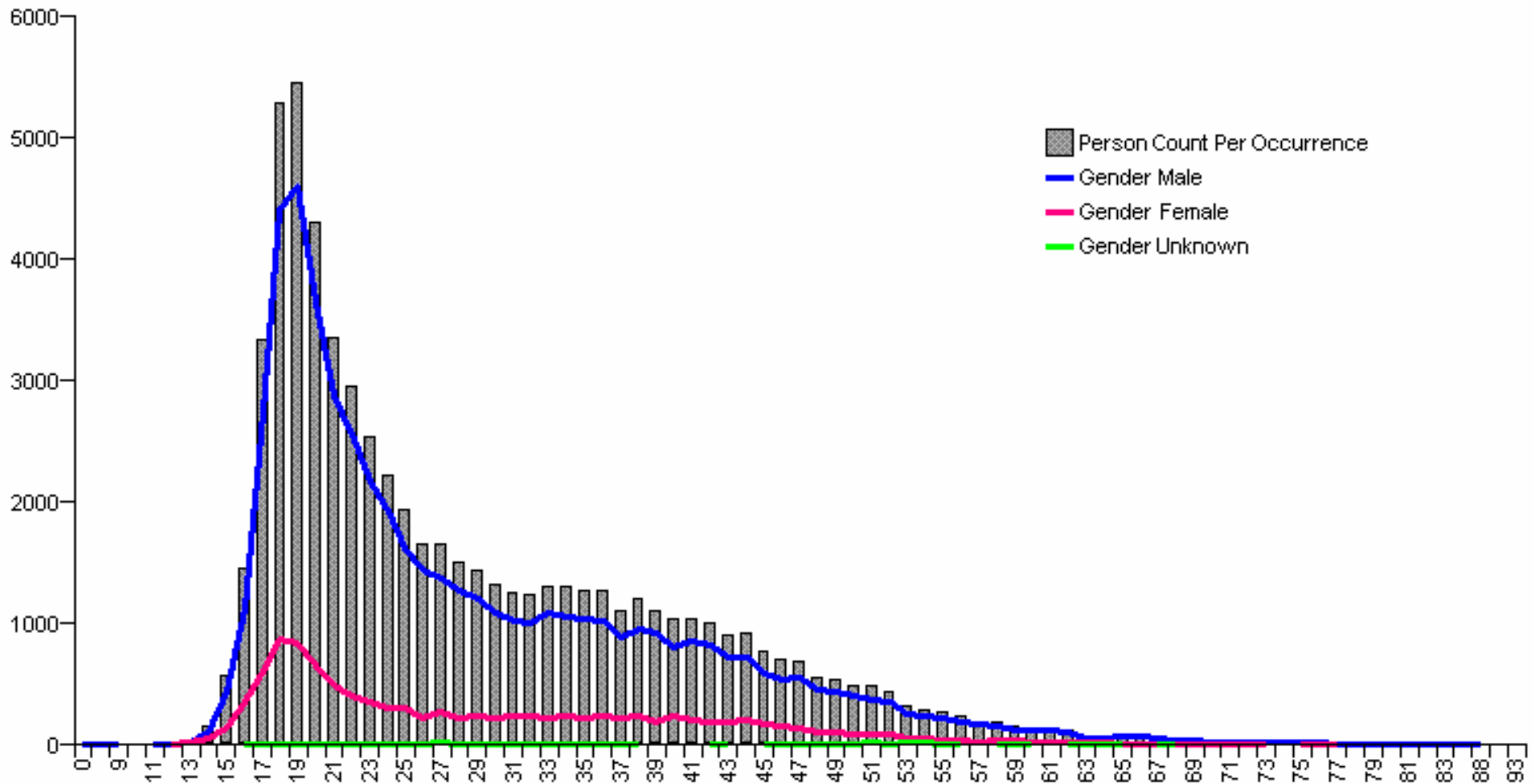


- Alcohol misuse is a huge driver of police work
  - Estimated to be associated with 50-70% of all police attendances
  - Alcohol involvement is consistently noted in family violence incidents attended by police (for a third of all offenders, and a fifth of all victims)
  - Alcohol also noted as a trigger for offenders in a large number of serious/aggravated assaults, including sexual assaults
  - National victimisation surveys also tell us that being intoxicated puts people at greater risk of being victims of violent crime
- And police also have to look after the intoxicated
  - The number of hours spent by police in dealing with ‘drunk home’ or ‘drunk custody’ cases has increased by over 30% in the last five years

# National Alcohol Consumed Intel Trends July 2005 – June 2006



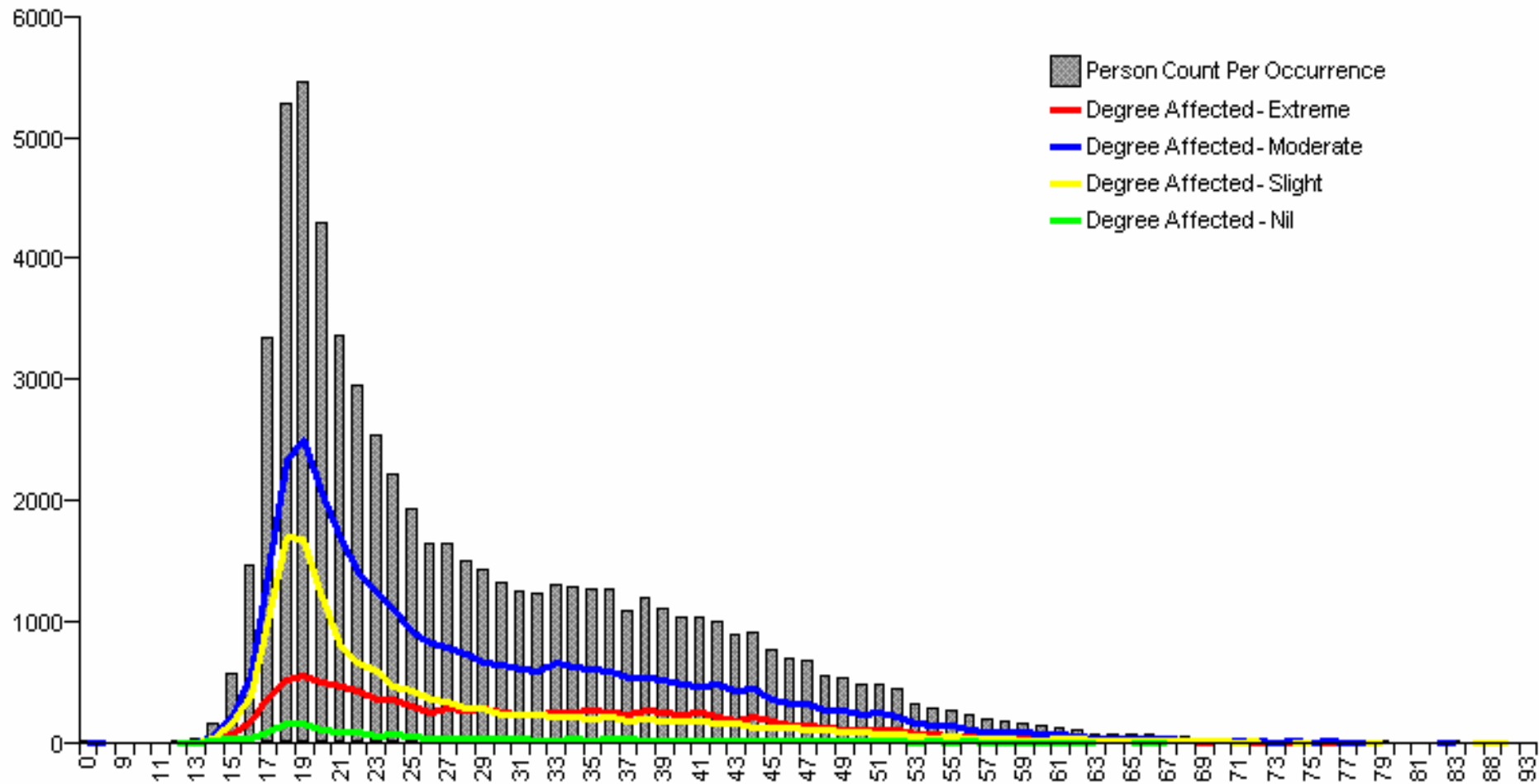
Alcohol Consumed Prior by Gender & Age (Alleged Offender)



# National Alcohol Consumed Intel Trends July 2005 – June 2006



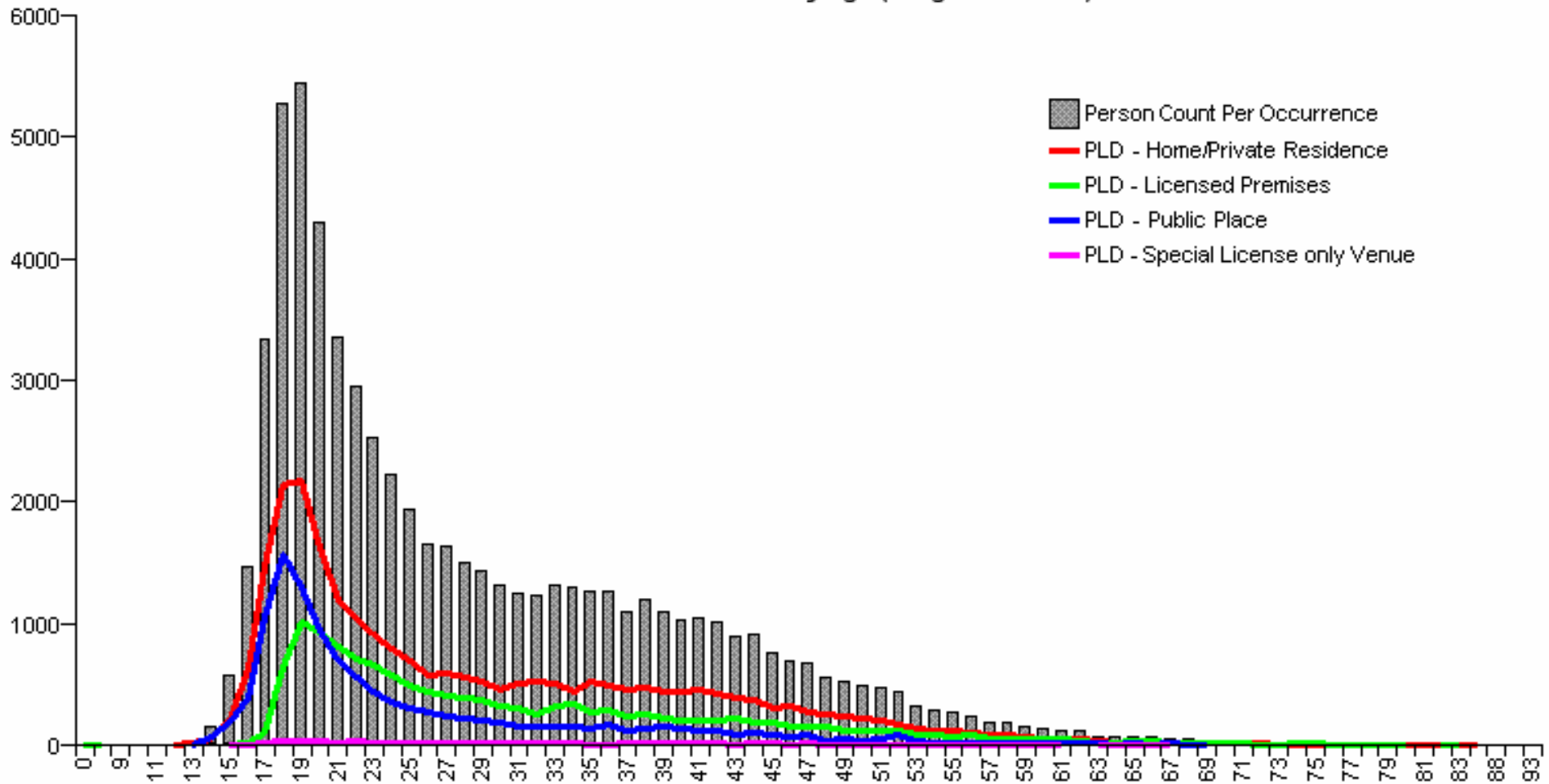
Degree Affected by Alcohol by Age ( Alleged Offender)



# National Alcohol Consumed Intel Trends July 2005 – June 2006



Place of Last Drink by Age (Alleged Offender)



# National Intel Trends

## Alcohol Consumed Prior to Offence

### July 2005 – June 2006



Offence Type	% Alcohol Consumed Prior by Alleged Offender
Assaults Police	67%
Offensive Behaviour	67%
Resist Police	64%
Disorderly Behaviour	62%
Disorderly Behaviour (Likely to Cause Violence)	62%
Fighting in a Public Place	60%
Injures with intent to injure	44%
Assaults with intent to Injure	41%
Male Assaults Female	39%
Assault Person with Stabbing/Cutting Weapon	35%
Posses Offensive Weapon	31%



# Police Alcohol Action Plan

## Contains four linked objectives:

- minimising alcohol-related crime and crashes
- tailoring responses for special events/population groups
- developing and supporting our workforce
- investing in research and evaluation



# Minimising crime and crashes

- Keeping doing what we know works well
  - Drink driving countermeasures
  - High visibility policing of licensed premises
  - Careful attention to liquor licensing functions
  - Deterring street-level consumption of alcohol
- Strengthening alcohol-related intel systems and processes
  - Alco-Link Project, wider use of 101L licensed premises visit forms, guidance for Districts on intelligence-directed response models, etc.
  - Investment in growing and developing analysis within Districts
- Continue to work closely with partner agencies
  - For example, Police is supporting an ACC and ALAC led initiative on management of alcohol use in sports clubs



# Special events / population groups



## Upping our game in managing large scale events

- Opportunities for Police to support greater controls around alcohol use at big events
- Could there be only low-strength beer in cups at sports stadia in the future? Could plastic only bottles be piloted at some NYE locations?

## Focus on youth and particular ethnic groups

- Greater emphasis on use of controlled purchase operations (CPOs)
- Exploring options around the use of infringement notices for youth alcohol offences (eg., development of a 'Your Choice' programme)
- Looking for ways to support targeted initiatives for/by specific groups (eg., support of South Auckland project to engage Maori Wardens in monitoring Sale of Liquor Act compliance by licensed premises)

# Workforce development / support



- **Boosting capability in key areas**
  - New national liquor licensing co-ordinator role
  - Investment in training and skill development
- **Striving for national consistency**
  - Commitment to annual conference for Police liquor licensing officers
  - Support for working jointly with other agencies to share approaches and agree on models of best practice
- **Encouraging specialisation and retention of staff**
  - Actively looking at career structures for our liquor licensing officers
  - Promoting a cadre of experienced 'go to' people on key practice areas



# Research and evaluation



**Counting  
the costs**

**Identifying  
the benefits**

**Better understanding  
'what works'**

- Looking to expand the evidence base